

CERTIFICATE OF LOCATION OF GOVERNMENT CORNER

NORTH QUARTER Corner of Section 27, Township 107, Range 41, 5TH P.M.

STATE OF MINNESOTA, County of MURRAY

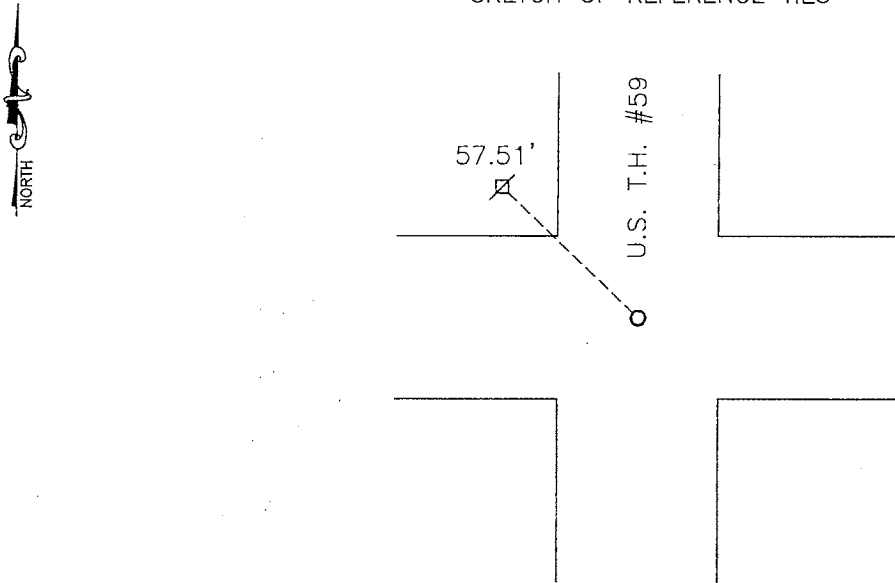
At the corner location shown on the sketch:

On _____ found a _____
DATE

left monument as found, lowered monument, removed monument (explain)

On 08-02-2010 placed a SURVEY SPIKE WITH SEAL #43844
DATE

SKETCH OF REFERENCE TIES



Minnesota State Plane Coordinate
System Murray County Datum
NAD83 (1996)

N: 174033.078
E: 503469.591

Nail and survey marker in utility pole NW 57.51'

Statement of evidence relative to this corner location is on back of page.

I hereby certify that this document and the data contained herein was prepared by me or under my direct supervision.

[Signature] 1/12/11
SIGNATURE DATE

Registration No. 43844

Land Surveyor, Professional Engineer
 County Surveyor, County Engineer

OFFICE OF THE COUNTY RECORDER
County of _____

I hereby certify that this document was filed in the Co. Recorders office at _____ .M on the JAN 18 2011 day of _____ A.D. 20 _____

County Recorder [Signature]
By _____, Deputy

DOCUMENT NO. _____

Statement of Evidence

In 1861, L.G.M. Fletcher did the original subdivision of the township.

MNDot highway plans show the corner being in the center of U.S. T.H. #59.

On August 2, 2010, Bueltel-Moseng Land Surveying set a survey spike with seal #43844 on line between the section corners and in the centerline of U.S. T.H. #59 as shown on MNDot plans.